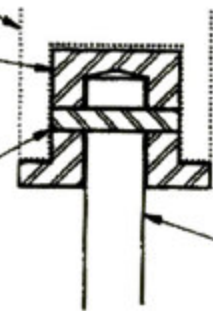


OVERTORQUE PROTECTOR

2" A. W. W. A.
OPERATING NUT

SHAFT EXTENSION'S SHEAR
PIN BETWEEN SHAFT AND
OPERATING NUT TO SHEAR
AT 250 FT. LBS.



SHAFT
EXTENSION

AUNSPACH VALVE
OVERTORQUE PROTECTOR
MODEL D86-250
TORQUE SETTING 220 FT. LBS.
WITH 2" SQUARE A. W. W. A.
OPERATING NUT AND
SOCKET BOTTOM

7-5/8"DIA. x 1/2"THK. SHAFT
DIAPHRAGM, STAINLESS STEEL
TYP 304

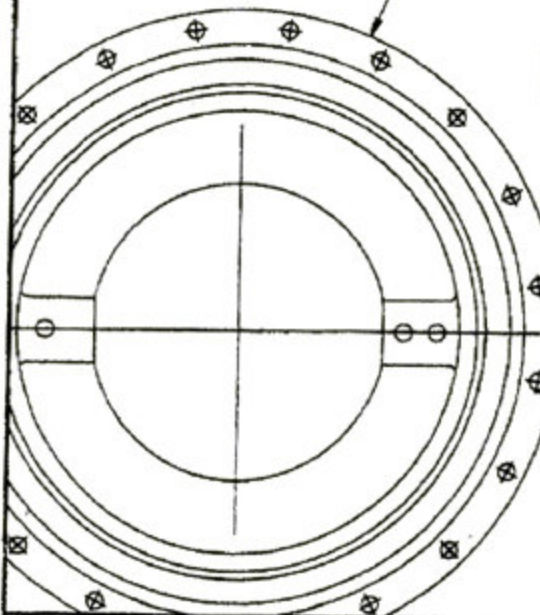
P. W. D. STANDARD
7" VALVE BOX AND COVER

SHAFT EXTENSION WITH
2" SQUARE A. W. W. A. OPERATING
NUT AND SOCKET BOTTOM
STAINLESS STEEL TYPE 304

BUTTERFLY VALVE

2" A. W. W. A.
OPERATING NUT

6"x3"x12" BRICK



STREET LEVEL OVERTORQUE PROTECTOR



DRAWN BY: T. KAUFMANN
CHECKED BY: M. LAVERY

DATE: 8-93
PAGE NO. 1 of 1

TRAVELING NUT OPERATION: STANDARDIZED INPUT TURNS VS. VALVE ANGLE FOR 0° - 5°

SIZE (INCH)	INPUT TURN (#)	ANGLE OF DISC OUT OF SEAT (degrees)	NUMBER OF TOTAL TURNS (+/-5)
36	1	0.4+/-	136
	3	1	
	6	2	
	8	3	
	10	4	
	13	5	
42 & 48	1	0.3+/-	215
	5	1	
	9	2	
	13	3	
	17	4	
	20	5	



15. **Street Level Over Torque Protector:** Furnish valves equipped with an Aunspach valve over torque protector. The Aunspach over torque protector (Model D-86-250) shall disengage automatically if torque in excess of 220 foot-pounds is applied when either opening or closing the valve. It should automatically reset when torque is reduced to pre-set level. The over torque protector shall be configured with a 2 inch AWWA nut at the top for valve key operation, and socket at the bottom to fit over top a 2 inch square AWWA nut. The over torque protector shall have a shaft extension which is configured as shown on the attached drawing. Vendor's design shall be submitted for approval.

The shaft extension shall be type 304 stainless steel with a 2 inch square AWWA operating nut and socket bottom. The shaft's operating nut shall be held in place by a shear pin. The solid stainless steel shear pin shall be 3/16 of an inch in diameter, annealed and cold worked so as to shear at a 250 foot-pounds torque. The shaft's bottom socket shall be field adjustable to allow for field cutting of the shaft length. Furnish shafts lengths unless otherwise specified.

Furnish a standard PWD 7 inch cast iron valve box to house the over torque protector within the roadway. The valve box shall also extend down around the shaft and set on the valve operator in such a manner so that no foreign matter can collect between the pipe and the shaft.

Over torque protector manufactured by:

Aunspach Controls Company
1897 McKelvey Hill Drive, Suite 301
St. Louis, Missouri 63043
Phone (314) 576-7587

16. **Coatings General:** The surfaces of iron and carbon steel shall be coated as herein specified or as approved. The surfaces to be coated shall be sand blasted in accordance with the requirements of the Steel Structures Painting Council Surface Preparation Specification No. 10-Near White Blast Cleaning, SSPC-SP10.

There shall be strict adherence to the manufacturer's directions for surface preparation and application of coatings. All coatings must be shop applied at ambient temperature 60 degrees Fahrenheit and above. Coatings shall not be baked but shall be allowed to dry or cure in a controlled environment at temperatures between 60 and 120 degrees Fahrenheit.

The Coating film shall not contain any bare spots, blisters, or cracks, and shall be uniformly deposited without runs or sags. The coating shall be worked into angles and crevices formed by joining members.