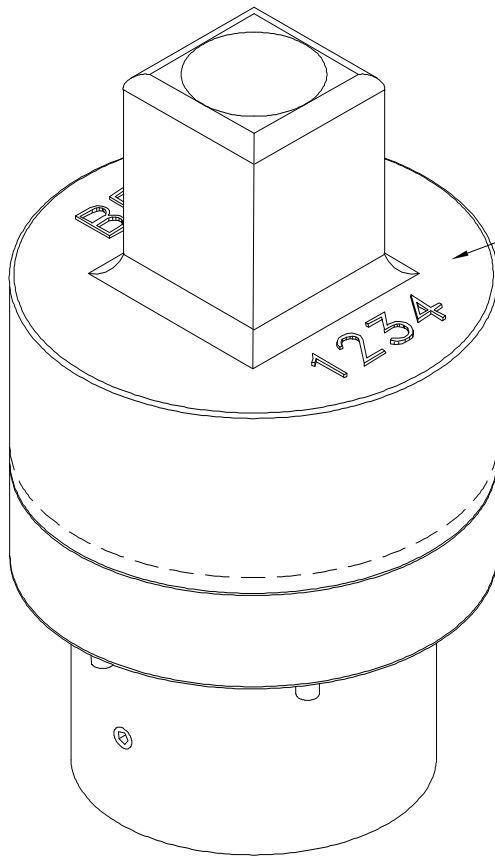
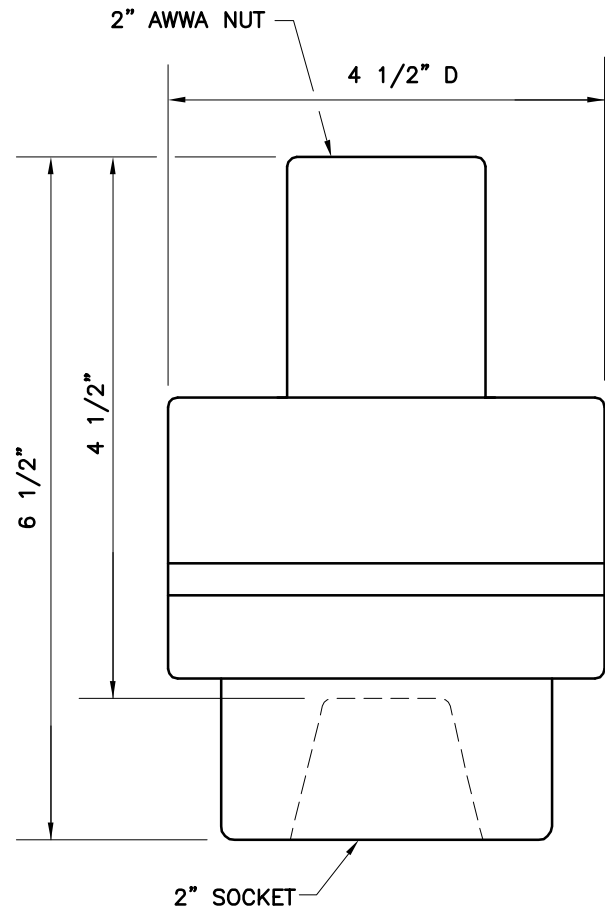


BALTIMORE WATER



IDENTIFICATION DISK

INCLUDE: VALVE SIZE, VALVE TYPE (I.E., BUTTERFLY VALVE-BFV), & NUMBER OF TURNS TO OPEN WITH ARROW



USE: AUNSPACH CONTROLS, MODEL D86 BW-250 VALVE
OVER TORQUE PROTECTOR OR APPROVED EQUAL



APPROVED :

[Signature]
HEAD, BUREAU OF WATER AND WASTEWATER
[Signature]
DIRECTOR, DEPARTMENT OF PUBLIC WORKS

CITY OF BALTIMORE
DEPARTMENT OF PUBLIC WORKS
BUREAU OF WATER AND WASTEWATER

STANDARD BUTTERFLY VALVE
OVER TORQUE PROTECTOR

ISSUED

REVISED

REVISED

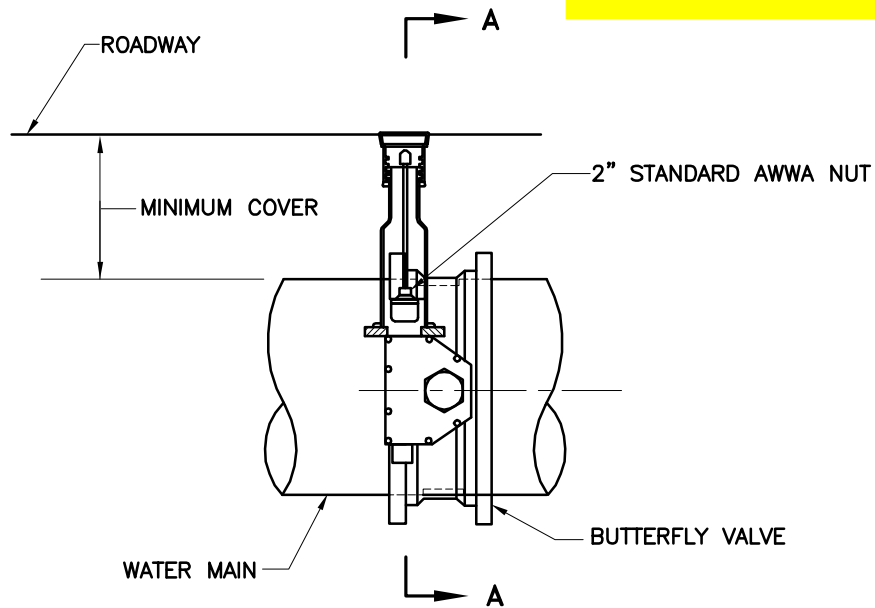
3 / 2008

STANDARD NO.
BC 835.03

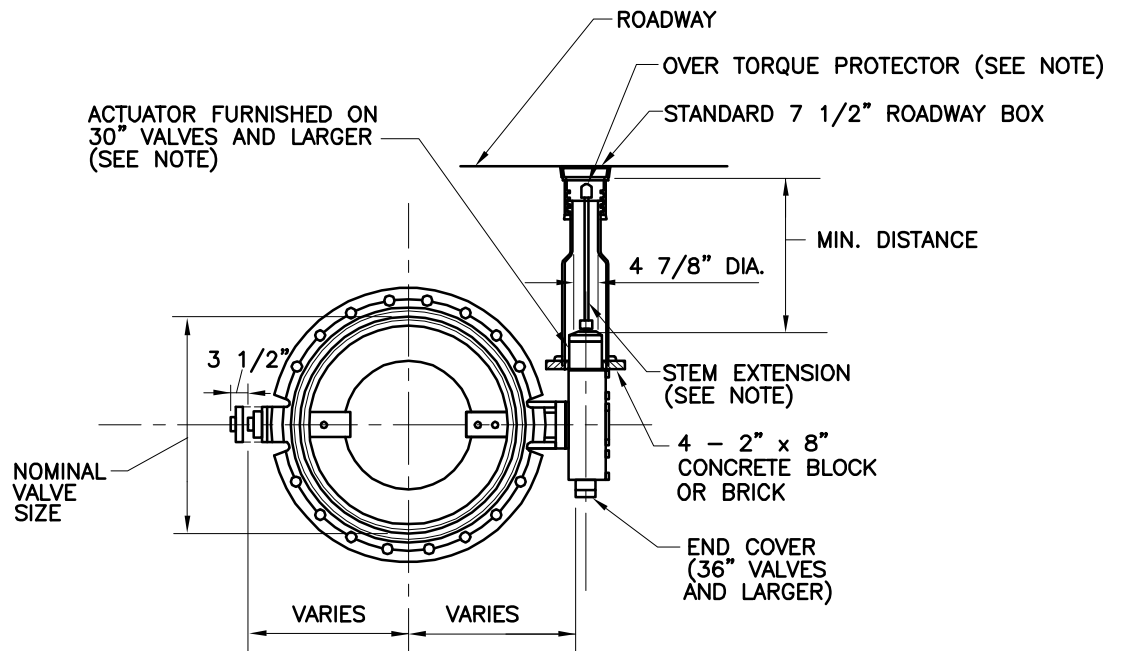
SCALE : NONE

SHEET 1 OF 1

BALTIMORE WATER



ELEVATION



NOTE:
SEE DPW BUTTERFLY VALVE
SPECIFICATION FOR ALL BUTTERFLY
VALVES 30"-72"

SECTION A-A



APPROVED :
[Signature]
HEAD, BUREAU OF WATER AND WASTEWATER
[Signature]
DIRECTOR, DEPARTMENT OF PUBLIC WORKS

CITY OF BALTIMORE
DEPARTMENT OF PUBLIC WORKS
BUREAU OF WATER AND WASTEWATER

STANDARD INSTALLATION
OF BUTTERFLY VALVE
WITH ROADWAY BOX
(30" - 72")

ISSUED	REVISED	REVISED
3 / 2008		
STANDARD NO. BC 835.02		
SCALE : NONE		SHEET 1 OF 1

be plain end with ductile iron rotatable (swivel) mechanical joint gland.

905.07.03 Water Valves and Tapping Sleeves.

- (a) Requirements: Valves and appurtenances shall conform to the specifications and requirements of the Department of Public Works of **Baltimore City** except as modified herein.

Water Valves		
	Resilient Seat Gate Valves	Rubber-Seated Butterfly Valves**
Applicable Valve Sizes	4" – 24" Diameter	30" – 72" Diameter
Rating	250 psig working pressure	250 psig differential operating pressure
Installation	16" – 24" diameter shall be installed with valve bonnet oriented horizontally or vertically per Contract Drawings	Installation in Cast-In-Place vaults sized per plans. Provide one pipeline access assembly adjacent to butterfly valve for access to adjust valve seat. Provide valve overtorque protectors and valve actuators per Baltimore City requirements.